

PUMP INFORMATION

- Type: Sump Pump(s)
 Grinder Pump(s)
 Non-Clog Pump(s)

Model NO: _____

Rating: _____ GPM _____ TDH

Motor: _____ HP _____ RPM

Elec: _____ PH _____ HZ _____ v

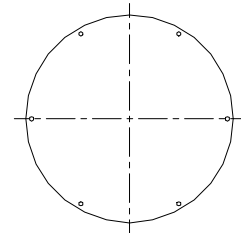
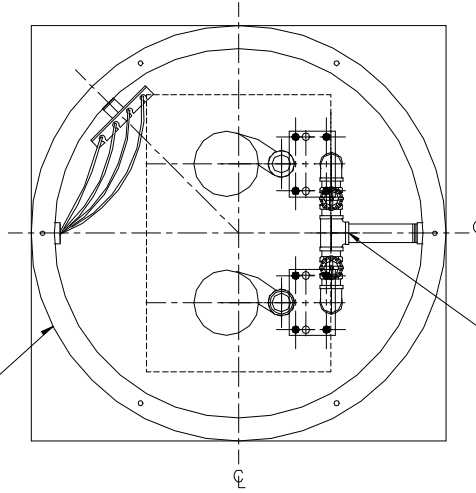
Elec: _____ FL AMPS

DISCHARGE PIPE

- 304 Stainless Steel
 Sch40 Galvanized Steel
 Sch80 PVC Pipe

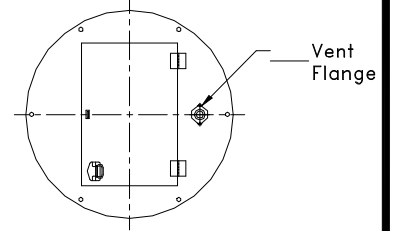
- 1 1/4"
 1 1/2"
 2"
 3"

- Anti-Floatation Flange
 Fiberglass Encapsulated
 ASTM A-36 Steel
 Round Fiberglass
 None



Solid Cover

- Fiberglass
 Steel



Hinged and Lockable Cover

- Fiberglass Aluminum Steel

- 3/16" Lifting Chain
 304 Stainless Steel
 Galvanized Steel

* Stainless Steel Cable is Available

- 3/8" 304 Stainless Steel Valve Extension Handle

- Gate Valve
 Brass
 Sch 80 PVC

- NPT Discharge Coupling
 Enameled Steel
 Stainless Steel

Union

- Ball Check Valve
 Cast Iron
 Sch80 PVC

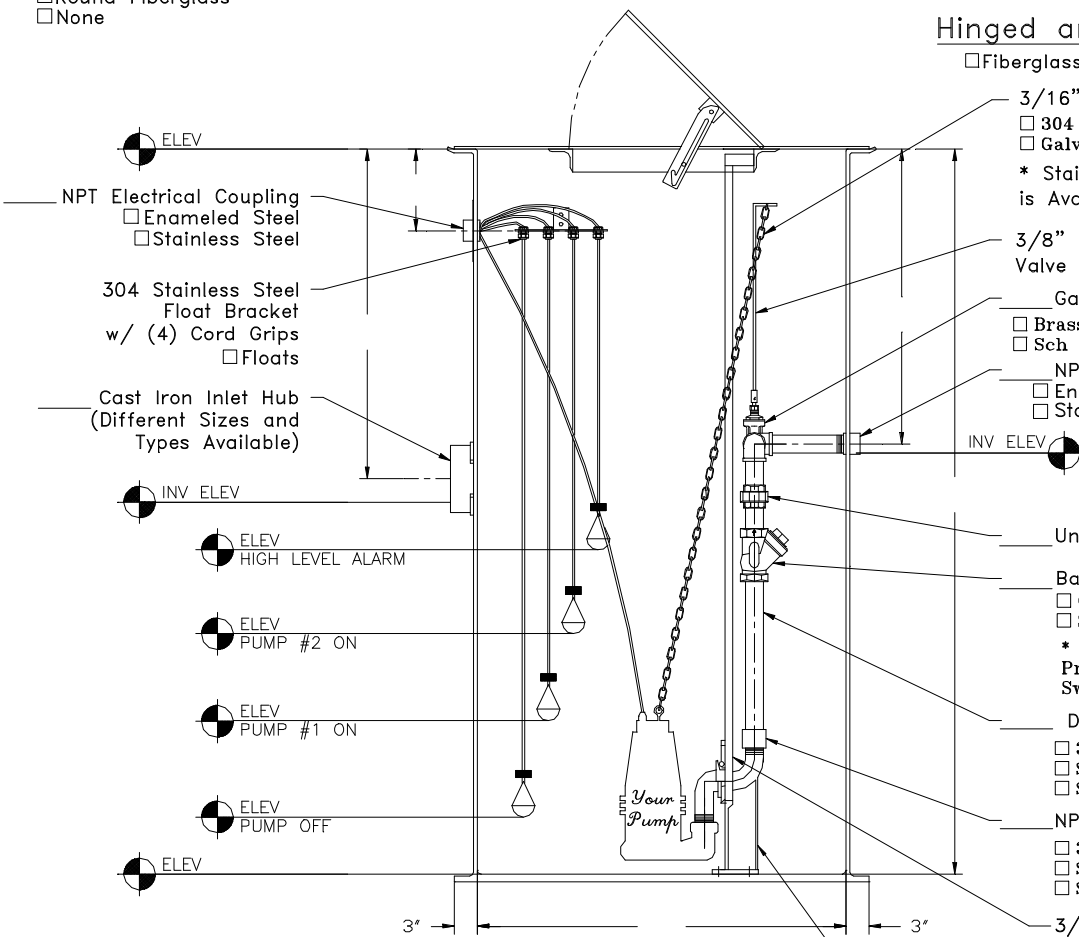
* 3" Systems are Provided with Brass Swing Check Valve

- Discharge Pipe
 304 Stainless Steel
 Sch40 Galvanized Steel
 Sch80 PVC Pipe

- NPT Coupling
 304 Stainless Steel
 Sch40 Galvanized Steel
 Sch80 PVC Pipe

- 3/4" Guiderail
 304 Stainless Steel
 Sch40 Galvanized Steel

- EZ2125 - 1 1/4" Lift-Out Coupling
 EZ2150 - 1 1/2" Lift-Out Coupling
 EZ2200 - 2" Lift-Out Coupling
 EZ3320 - 3" Lift-Out Coupling For 2" Pump
 EZ3300 - 3" Lift-Out Coupling



- ELEV
 NPT Electrical Coupling
 Enameled Steel
 Stainless Steel

- 304 Stainless Steel Float Bracket w/ (4) Cord Grips
 Floats

Cast Iron Inlet Hub (Different Sizes and Types Available)

INV ELEV

ELEV HIGH LEVEL ALARM

ELEV PUMP #2 ON

ELEV PUMP #1 ON

ELEV PUMP OFF

ELEV

3" 3"



EZ-Out Prefabricated Fiberglass Lift Station
 Duplex - Side Discharge

Scale: None
 Drawn By: RM
 App'd By: .
 Date: 04/21/03

This print is and contains confidential proprietary information owned exclusively by TOPP INDUSTRIES, INC. It is furnished on a strictly confidential basis. This restriction includes, but is not limited to the condition that this print will not be used as a record or to identify or inspect parts or for other information purposes and will not be used to manufacture or procure the manufacture of the items shown in this print by any other source than TOPP INDUSTRIES, INC.

Highway 25 North P.O. Box 420
 Rochester, IN 46975
 Phone: 800/354-4934 Fax: 574/223-6106

Supersedes Prints
 Prior To: 04/21/03

Reference No: 16734

Revisions

Ⓐ	First Released.